

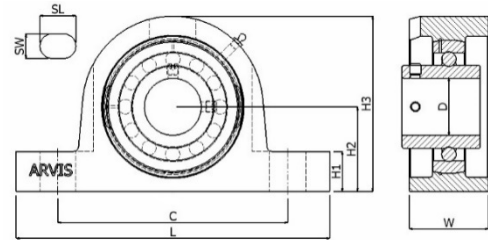
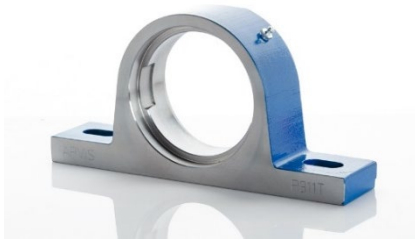
UCP 300 Series

STEEL PILLOW BLOCKS

Guaranteed against breakage

Heavy-duty steel housings for self-aligning ball bearing inserts.

For use in arduous conditions where cast iron units break due to shock or vibration.



Unit No	Size imp	Size mm	Hsg only	Brg no	Øsph	L	C	W	H1	H2	H3	SL	SW	BOLT	Weight KG
UCP305-14E UCP305-25M UCP305-16E	7/8 1	25	P305T	UCP305-14 UCP305 UCP305-16	62	175	132	-0	16	45	85	20	17	M12	1.7
UCP306T-18E UCP306T-30M	1 1/8	30	P306T	UC306-18 UC306	72	180	140	42	17	50	95	20	17	M12	2.2
UCP307T-20E UCP307T-22E UCP307T-35M	1 1/4 1 3/8	35	P307T	UC307-20 UC307-22 UC307	80	210	160	47	19	56	107	25	17	M12	3.0
UCP308T-24E UCP308T-40M	1 1/2	40	P308T	UC308-24 UC308	90	220	170	47	19	60	118	27	17	M12	3.8
UCP309T-26E UCP309T-28E UCP309T-45M	1 5/8 1 3/4	45	P309T	UC309-26 UC309-28 UC309	100	245	190	53	21	67	132	30	20	M16	4.9
UCP310T-30E UCP310T-50M	1 7/8	50	P310T	UC310-30 UC310	110	275	212	58	24	75	148	35	20	M16	6.6
UCP311T-32E UCP311T-34E UCP311T-55M	2 2 1/8	55	P311T	UC311-32 UC311-34 UC311	120	310	236	63	27	80	158	38	20	M16	7.9
UCP312T-36E UCP312T-60M UCP312-38E	2 1/4 2 3/8	60	P312T	UC312-36 UC312 UC312-38	130	330	250	68	29	85	167	38	25	M20	9.5
UCP313T-40E UCP313T-65M	2 1/2	65	P313T	UC313-40 UC313	140	340	260	73	32	90	176	38	25	M20	10.7
UCP314T-44 UCP314T-70M	2 3/4	70	P314T	UC314-44 UC314	150	360	280	78	35	95	186	40	27	M20	12.4
UCP315T-75M UCP315T-48E	3	75	P315T	UC315 UC315-48	160	380	290	82	35	100	198	40	27	M24	14.8
UCP316T-50E UCP316T-80M	3 1/8	80	P316T	UC316-50 UC316	170	400	300	88	35	106	209	40	27	M24	18.5
UCP317T-52E UCP317T-85M	3 1/4	85	P317T	UC317-52 UC317	180	420	320	93	40	112	220	45	33	M24	20.3
UCP318T-56E UCP318T-90M	3 1/2	90	P318T	UC318-56 UC318	190	430	330	93	40	118	234	45	33	M24	22.8
UCP319T-95M UCP319T-60E	3 3/4	95	P319T	UC319 UC319-60	200	470	360	101	46	125	248	50	36	M30	29.0
UCP320T-100M UCP320T-64E	4	100	P320T	UC320 UC320-64	215	490	380	102	46	140	273	50	36	M30	35.1
UCP321T-105M		105	P321T	UC321	225	490	380	103	46	140	278	50	36	M30	37.6
UCP322-110M UCP322-71E	4 7/16	110	P322T	UC322 UC322-71	240	520	400	116	50	150	296	55	40	M36	44.0
UCP324T-120M UCP324T-79E	4 15/16	120	P324T	UC324 UC324-79	260	570	450	121	50	160	316	55	40	M36	55.4
UCP326T-130M UCP326T-82E	5 1/8	130	P326T	UC326 UC326-82	280	600	480	123	50	180	335	55	40	M36	72.1
UCP328-88E UCP328-140M	5 1/2	140	P328T	UC328-88 UC328	300	620	500	128	60	200	393	55	40	M36	92.5