

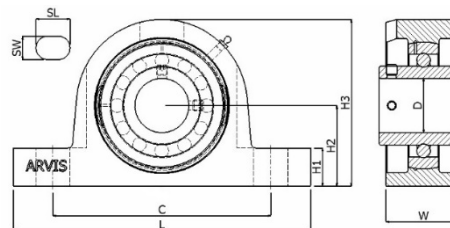
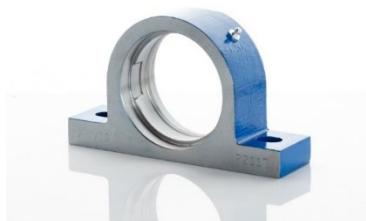
UCP 200 Series

STEEL PILLOW BLOCKS

Guaranteed against breakage

Heavy-duty steel housings for self-aligning ball bearing inserts.

For use in arduous conditions where cast iron units break due to shock or vibration.



Unit No	Size imp	Size mm	Hsg only	Brg no	Øsph	L	C	W	H1	H2	H3	SL	SW	BOLT
UCP204T-12E UCP204T-20M	3/4	20	P204T	UC204-12 UC204	47	127	95	31	13	33.3	64	19	12	M10
UCP205T-13E UCP205T-14E UCP205T-15E UCP205T-25M UCP205T-16E	13/16 7/8 15/16 1	25	P205T	UC205-13 UC205-14 UC205-15 UC205 UC205-16	52	139	105	32	16	36.5	70.8	19	12	M10
UCP206T-17E UCP206T-18E UCP206T-30M UCP206T-19E	1 1/16 1 1/8 1 3/16	30	P206T	UC206-17 UC206-18 UC206 UC206-19	62	160.5	121	39	18.3	42.9	84.5	20	14	M12
UCP207T-20E UCP207T-21E UCP207T-22E UCP207T-35M UCP207T-23E	1 1/4 1 5/16 1 3/8 1 7/16	35	P207T	UC207-20 UC207-21 UC207-22 UC207 UC207-23	72	166	129	43	17.5	47.6	93	19.5	14	M12
UCP208T-24E UCP208T-25E UCP208T-40M	1 1/2 1 9/16	40	P208T	UC208-24 UC208-25 UC208	80	180	136	43	18.3	49.2	91.2	24	15	M14
UCP209T-26E UCP209T-27E UCP209T-28E UCP209T-45M	1 5/8 1 11/16 1 3/4	45	P209T	UC209-26 UC209-27 UC209-28 UC209	85	190.5	146	47		54	146	21	15	M14
UCP210T-29E UCP210T-30E UCP210T-31E UCP210T-50M	1 13/16 1 7/8 1 15/16	50	P210T	UC210-29 UC210-30 UC210-31 UC210	90	206	159	48	21	57.2		22	20	M16
UCP211T-32E UCP211T-33E UCP211T-34E UCP211T-55M UCP211T-35E	2 2 1/16 2 1/8 2 3/16	55	P211T	UC211-32 UC211-33 UC211-34 UC211 UC211-35	100	220	170	57	25	63.5	129.5	24	18	M16
UCP212T-36E UCP212T-37E UCP212T-60M UCP212T-38E	2 1/4 2 3/16 2 3/8	60	P212T	UC212-36 UC212-37 UC212 UC212-38	110	260	187.5	68	27	69.85	143	34	22	M20
UCP213T-40E UCP213T-65M	2 1/2	65	P213T	UC213-40 UC213	120	265	203	61	26	76.2	150	30	25	M20
UCP214T-43E UCP214T-44E UCP214T-70M	2 11/16 2 3/4	70	P214T	UC214-43 UC214-44 UC214	125	266	206.9	72	27	79.4	159	30	22	M20
UCP215T-46E UCP215T-47E UCP215T-75M UCP215T-48E	2 7/8 2 15/16 3	75	P215T	UC215-46 UC215-47 UC215 UC215-48	130	275	217	73	28	82.6	162.6	30	25	M24
UCP216T-80M		80	P216T	UC216	140	292	232	78	33	88.9	184	35	26	M24
UCP217T-52E UCP217T-85M	3 1/4	85	P217T	UC217-52 UC217	150	310	247	83	32	95.2	185	35	26	M24
UCP218T-56E UCP218T-90M	3 1/2	90	P218T	UC218-56 UC218	160	327	262	88	34	101.6	210	40	26	M24