

NON-SELF OILING PLUMMER BLOCKS

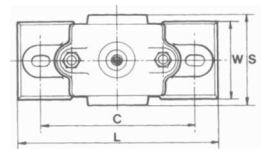
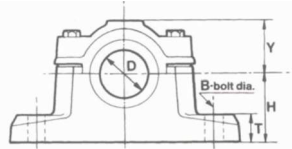
Non-Self-Oiling Plummer blocks, 1 1/2 & 2 diameters through B.S. and Engineers series.

Holding Down Bolts Sizes

1" to 5 1/2" have 2 HD bolts, sizes 6" to 8" have 4. Grease nipples supplied.

Horizontal Pattern 1 1/2 and 2 diameters through (dimension S). These Plummer Blocks are fitted with gunmetal bearings made in halves. The lubricant is fed through grooves direct to the bearing surfaces, ensuring efficient lubrication without loss. On sizes up to and including 4" diameter bore the top half of each bearing has a nipple projection drilled and tapped to receive oil or grease lubricator. On sizes 4 1/2" and above the gunmetal bearings are prevented from rotating by snugs at one side, both halves being alike, the cap is drilled and tapped to receive oil or grease lubricator. Prices on application.

NOTE: These units were originally made to inch dimensions. The same castings are used for imperial & metric sizes and the 1 1/2 times' and '2 times' rule applies only to the inch dimensions. Therefore, the distances through the metric bores are 1 1/2 or 2 times the inch sizes



D		ORDER REF		DIMENSIONS INCHES MM (In Italics)										WEIGHT (Kgs)		BSP GREASE NIPPLE	
Inch	MM	1 1/2 Dia	2 Dia	CROSS CENTRES WHEN S IS		H		Y		W WHEN S IS		T	B (MM)		1 1/2 Dia	2 Dia	
				1 1/2 Dia	2 Dia			1 1/2 Dia	2 Dia								
1	25	NS16E1	NS16E2	6 1/4	4 1/4			1 1/4	1 1/4	1 1/4	1 1/4	3/4	M10	1.2	1.7		
		NS25M1	NS25M2	160	120			44.5	30	30	45	19					
1 1/4	30	NS20E1	NS20E2	7	5 1/8			2	1 7/16	1 1/2	2 1/4	3/4	M10	1.8	2.3		
		NS30M1	NS30M2	180	140			50.8	35	40	55	19					
1 1/2	40	NS24E1	NS24E2	8 1/4	6 1/4			2 1/4	1 1/2	1 1/2	2 1/2	3/2	M12	2.8	4.2		1/8"
		NS40M1	NS40M2	210	160			57.2	40	45	65						
1 3/4	45	NS28E1	NS28E2	9	7			2 1/2	1 7/8	2	2 1/2	7/8	M12	4.5	5.5		
		NS45M1	NS45M2	230	180			63.5	48	50	70	22					
2	50	NS32E1	NS32E2	10 1/4	7 3/4			2 3/4	2 1/4	2 1/4	3 1/4	1	M16	5.8	8		
		NS50M1	NS50M2	260	195			69.9	55	55	85	25					
2 1/4	55	NS36E1	NS36E2	10 1/2	8 1/4			3	2 1/2	2 1/2	3 1/4	1 1/4	M16	903	9.5		
		NS55M1	NS55M2	265	210			76.2	60	65	90	30					
2 1/2	60	NS40E1	NS40E2	12	9 1/4			3 1/4	2 9/16	3	4	1 1/4	M20	11	14		
		NS60M1	NS60M2	305	235			82.6	65	75	100	30					
		NS65M1	NS65M2														
2 3/4	70	NS44E1	NS44E2	12 1/4	10			3 1/2	2 13/16	3 1/4	4 1/4	1 1/4	M20	13	17.5		
		NS70M1	NS70M2	325	255			88.9	70	85	110	35					
3	75	NS48E1	NS48E2	13 1/4	11			4	3 1/16	3 1/2	5	1 1/4	M20	19	20		1/4"
		NS75M1	NS75M2	350	280			101.6	80	90	125	40					
3 1/4	80	NS52E1	NS52E2	14 1/4	11 1/2			4 1/4	3 5/16	3 3/4	5 1/4	1 1/2	M20	21	30		
		NS80M1	NS80M2	375	290			108	85	95	135	40					
		NS85M1	NS85M2														
3 1/2	90	NS56E1	NS56E2	15 1/4	12			4 1/2	3 3/16	4	5 1/4	1 1/4	M20	24.5	36		
		NS90M1	NS90M2	395	305			114.3	90	100	145	45					
4	95	NS64E1	NS64E2	17 1/4	13 1/4			5 1/2	4 3/16	4 1/2	6 1/2	2	M24	35	50		
		NS95M1	NS95M2	440	345			139.7	105	115	165	50					
		NS100M1	NS100M2														
4 1/2	110	NS72E1	NS72E2	19 1/4	15 1/2			5 1/2	4 1/2	5 1/4	7 1/4	2 1/2	M30	52	71		
		NS110M1	NS110M2	500	395			139.7	115	135	185	55					
		NS115M1	NS115M2														
5	125	NS80E1	NS80E2	20 1/4	16			6	5	6	8 1/4	2 1/2	M30	70	91		
		NS125M1	NS125M2	520	405			152.4	125	150	210	60					
5 1/2	140	NS88E1	NS88E2	22 1/4	17 1/2			6 1/2	5 1/4	6 1/2	8 1/4	2 1/2	M30	90	114		3/8"
		NS140M1	NS140M2	565	445			165.1	135	165	225	65					
6	150	NS96E1	NS96E2	24	18 1/2	3 1/4	5	7	5 3/4	7	9 1/2	2 1/2	M30	110	144		
		NS150M1	NS150M2	610	470	90	5	177.8	146	180	240	65					
6 1/2	160	NS104E1	NS104E2	27	21	3 3/4	5 1/2	7 1/2	6 1/4	7 1/4	10 1/2	3	M30	150	192		
		NS160M1	NS160M2	685	535	95	140	190.5	165	195	265	75					1/2"
		NS165M1	NS165M2														
		NS170M1	NS170M2														
7	180	NS112E1	NS112E2	28	22	4	5 3/4	8	7 1/2	8	11 1/2	3 1/2	M30	175	232		
		NS180E1	NS180E2	710	560	100	145	203.2	190	205	290	80					
7 1/2	190	NS120E1	NS120E2	30	23 1/2	4 1/4	6	8 1/2	7 1/4	8 1/2	12 1/4	3 1/4	M36	205	280		2 X 3/8"
		NS190M1	NS190M2	760	592	110	150	215.9	195	215	310	85					
8	200	NS128E1	NS128E2	32	25	4 1/2	6 1/2	9	8 1/4	9 1/4	13 1/4	3 1/2	M36	245	343		
		NS200M1	NS200M2	810	635	115	165	228.6	205	235	335	90					

Customised versions of these units can be supplied - Specials made to order