

## ANGULAR PATTERN NON-SELF OILING PLUMMER BLOCKS

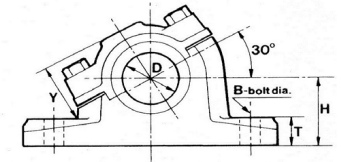
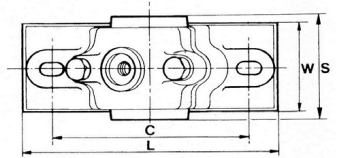
### Cap Bolts

Sizes 1" to 4" have 2 cap bolts. Sizes 5" to 8" have 4 cap bolts

### Holding Down Bolts

Sizes 1" to 5 1/2" have 2HD bolts Sizes 6" to 8" have 4 HD Bolts  
Grease nipples supplied

Angular Pattern 1 1/2 and 2 diameters through (dimensions S)



D	Order Ref		Dimensions Inches										Weight (KGS)		BSP Grease Nipple	
	Inch	1 1/2 DIA	2 DIA	L	C	CROSSCENTRES when S is		H	Y	W when S is		T	B (M/M)	1 1/2 DIA		2 DIA
					1 1/2 DIA	2 DIA			1 1/2 DIA	2 DIA						
1	NS16E1A	NS16E2A	6 1/4	4 3/4			1 3/4	1 1/4	1 1/4	1 3/4	3/4	M10	1.4	2.0		
1 1/4	NS20E1A	NS20E2A	7	5 1/2			2	1 7/16	1 1/2	2 1/8	3/4	M10	2.1	2.7		
1 1/2	NS24E1A	NS24E2A	8 1/4	6 1/4			2 1/4	1 5/8	1 3/4	2 1/2	7/8	M12	3.3	4.9		
1 3/4	NS28E1A	NS28E2A	9	7			2 1/2	1 7/8	2	2 3/4	7/8	M12	5.4	6.4		
2	NS32E1A	NS32E2A	10 1/4	7 3/4			2 3/4	2 1/8	2 1/4	3 1/4	1	M16	6.9	9.3		
2 1/4	NS36E1A	NS36E2A	10 1/2	8 1/4			3	2 3/8	2 5/8	3 5/8	1 1/8	M16	11.1	13.0		
2 1/2	NS40E1A	NS40E2A	12	9 1/4			3 1/4	2 9/16	3	4	1 1/4	M20	12.5	16.4		
2 3/4	NS44E1A	NS44E2A	12 3/4	10			3 1/2	2 13/16	3 1/4	4 3/8	1 3/8	M20	17.5	20.5		
3	NS48E1A	NS48E2A	13 3/4	11			4	3 1/16	3 1/2	5	1 1/2	M20	20.1	25.7		
3 1/4	NS52E1A	NS52E2A	14 3/4	11 1/2			4 1/4	3 5/16	3 3/4	5 3/8	1 5/8	M20	25.2	35.1		
3 1/2	NS56E1A	NS56E2A	15 1/2	12			4 1/2	3 9/16	4	5 3/4	1 3/4	M20	29.4	42.1		
4	NS64E1A	NS64E2A	17 1/4	13 1/2			5	4 3/16	4 1/2	6 1/2	2	M24	42	59		
4 1/2	NS72E1A	NS72E2A	19 3/4	15 1/2			5 1/2	4 1/2	5 1/4	7 1/4	2 1/8	M30	62	83		
5	NS80E1A	NS80E2A	20 1/2	16			6	5	6	8 1/4	2 1/4	M30	84	106		
5 1/2	NS88E1A	NS88E2A	22 1/4	17 1/2			6 1/2	5 1/4	6 1/2	8 3/4	2 1/2	M30	108	133		
6	NS96E1A	NS96E2A	24	18 1/2	3 1/2	5	7	5 3/4	7	9 1/2	2 5/8	M30	132	168		
6 1/2	NS104E1A	NS104E2A	27	21	3 3/4	5 1/2	7 1/2	6 1/2	7 3/4	10 1/2	3	M30	180	225		
7	NS112E1A	NS112E2A	28	22	4	5 3/4	8	7 3/8	8	11 1/2	3 1/8	M30	210	270		
7 1/2	NS120E1A	NS120E1A	30	23 1/2	4 1/4	6	8 1/2	7 5/8	8 1/2	12 1/4	3 1/4	M36	246	327		
8	NS128E1A	NS128E2A	32	25	4 1/2	6 1/2	9	8 1/8	9 1/4	13 1/4	3 1/2	M36	294	401		

**Note: These units were originally made to inch dimensions. The same castings are used for imperial & metric sizes and the '1 1/2 times' and '2 times' rule applies only to the inch dimensions. Therefore, the distances through the metric bore sizes are 1 1/2 or 2 times the inch size**