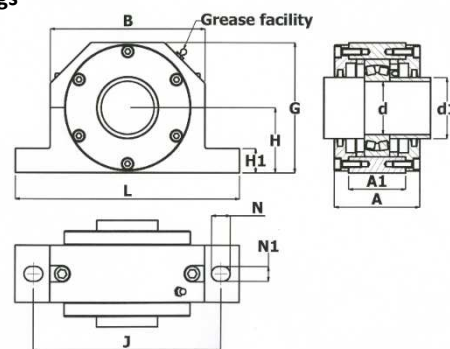
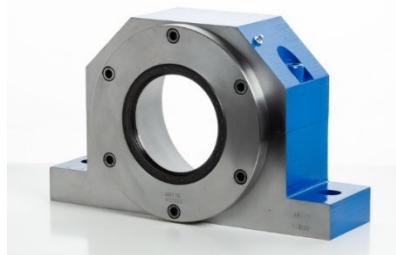


**FLAME CUT STEEL BEARING HOUSINGS.** Fully interchangeable with SN style bearing housings

**End covers are fully split on this unit.**

Ends can be milled for ease of assembly & repeatability



**Machined to receive parallel bore spherical roller bearings. Can be machined for 2 or 4 bolt fixings.**

Shaft Dia d		Type	H	J	N1	N	A	L	A1	H1	B	G	S	Bearing	Adapter Sleeve	No	Locating Rings Designation
(mm)	(Inches)																
45		FC 510SS	60	170	15	20	90	205	60	25	120	116		1210K	H 210	2	FRB 10.5/90
														2210K	H 310	2	FRB 9/90
														22210CK	H 310	2	FRB 9/90
50	1 15/16, 2	FC 511SS	70	210	18	23	90	255	60	28	160	140	28	1211K	H 211	2	FRB 11.5/100
														2211K	H 311	2	FRB 9.5/100
														22211CK	H 311	2	FRB 9.5/100
55		FC 512SS	70	210	18	23	95	255	65	30	170	140	30	1212K	H 212	2	FRB 13/110
														2212K	H 312	2	FRB 10/1110
														22212CK	H 312	2	FRB 10/110
60	2 3/16, 2 1/4	FC 513SS	80	230	18	23	105	275	70	30	190	160	33	1213K	H 213	2	FRB 14/120
														2213K	H 313	2	FRB 10/120
														22213CK	H 313	2	FRB 10/120
65	2 7/16, 2 1/2	FC 515SS	80	230	18	23	105	280	70	30	190	160	34	1215K	H 215	2	FRB 15.5/130
														2215K	H 315	2	FRB 12.5/130
														22215CK	H 315	2	FRB 12.5/130
70	2 11/16, 2 3/4	FC 516SS	95	260	22	27	110	315	75	32	210	190	37	1216K	H 216	2	FRB 16/140
														2216K	H 316	2	FRB 12.5/140
														22216CK	H 316	2	FRB 12.5/140
75	2 15/16, 3	FC 517SS	95	260	22	27	115	320	85	32	210	190	40	1217K	H 217	2	FRB 16.5/150
														2217K	H 317	2	FRB 12.5/150
														22217CK	H 317	2	FRB 12.5/150
80	3 3/16	FC 518SS	100	290	22	27	130	345	95	35	235	220	47	1218K	H 218	2	FRB 17.5/160
														2218K	H 318	2	FRB 12.5/160
														22218CK	H 318	2	FRB 12.5/160
														23218CK	H 2318	2	FRB 6.25/160
85	3 5/16, 3 3/4	FC 519SS	112	290	22	27	135	345	95	35	235	222	45	1219K	H 219	2	FRB 18/170
														2219K	H 319	2	FRB 12.5/170
														22219CK	H 319	2	FRB 12.5/170
90	3 7/16, 3	FC 520SS	112	320	26	32	145	380	105	40	260	222	53	1220K	H 220	2	FRB 18/180
														2220K	H 320	2	FRB 12/180
														22220K	H 320	2	FRB 12/180
														23220CK	H 2320	2	FRB 4.85/180
100	3 15/16, 4	FC 522SS	125	350	26	32	155	410	110	45	290	250	58	1222K	H 222	2	FRB 21/200
														2222K	H 322	2	FRB 13.5/200
														22222CK	H 322	2	FRB 13.5/200
														23222CK	H 2322	2	FRB 5.1/200
110	4 3/16, 4 1/4	FC 524SS	140	350	26	32	170	410	120	45	120	280	62	22224CK/W33	H 3124	2	FRB 22/215
														23224CK/W33	H 2324	2	FRB 14/215
115	4 7/16, 4 1/2	FC 526SS	150	380	28	35	180	445	130	50	320	300	65	22226CK/W33	H 3126	2	FRB 5/230
														23226CK/W33	H 2326	2	FRB 15/5/230
125	4 15/16, 5	FC 528SS	150	420	35	42	190	500	135	50	350	305	70	22228CK/W33	H 3128	2	FRB 15/250
														23228CK/W33	H 2328	2	FRB 5/250
135	5 3/16, 5 1/4	FC 530SS	160	450	35	42	200	530	145	60	370	325	76	22230CK/W33	H 3130	2	FRB 16.5/270
														23230CK/W33	H 2330	2	FRB 16.5/270
140	5 7/16, 5 1/2	FC 532SS	170	470	35	42	220	550	160	60	390	345	82	22232CK/W33	H 3132	2	FRB 17/290
														23232CK/W33	H 2332	2	FRB 5/290