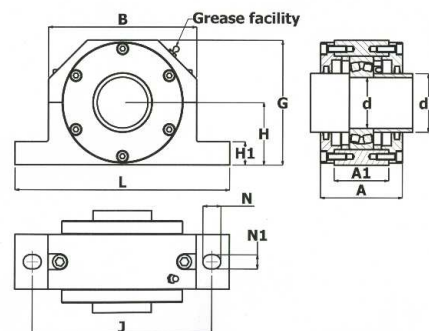
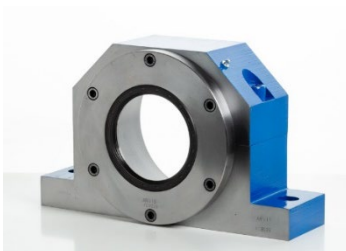


FLAME CUT STEEL BEARING HOUSINGS. Fully interchangeable with SN style bearing housings.

End covers are fully split on this unit.

Ends can be milled for ease of assembly & repeatability



Machined to receive parallel bore spherical roller bearings. Can be machined for 2 or 4 bolt fixings.

	Shaft Dia (d1)	Type	H	J	N1	N	A	L	A1	H1	B	G	Bearing	Locating Rings No	Designation
50	60	FC 210SS	60	170	15	20	90	205	60	25	120	116	1210	2	FRB 10.5/90
													2210	2	FRB 9/90
													22210C	2	FRB 9/90
55	65	FC 211SS	70	210	18	23	90	255	60	28	160	140	1211	2	FRB 11.5/100
													2211	2	FRB 9.5/100
													22211C	2	FRB 9.5/100
60	70	FC 212SS	70	210	18	23	95	255	65	30	170	140	1212	2	FRB 13/110
													2212	2	FRB 10/1110
													22212C	2	FRB 10/110
65	75	FC 213SS	80	230	18	23	105	275	70	30	190	160	1213	2	FRB 14/120
													2213	2	FRB 10/120
													22213C	2	FRB 10/120
70	80	FC 215SS	80	230	18	23	105	280	70	30	190	160	1215	2	FRB 15.5/130
													2215	2	FRB 12.5/130
													22215C	2	FRB 12.5/130
75	80	FC 216SS	95	260	22	27	110	315	75	32	210	190	1216	2	FRB 16/140
													2216	2	FRB 12.5/140
													22216C	2	FRB 12.5/140
80	90	FC 217SS	95	260	22	27	115	320	85	32	210	190	1217	2	FRB 16.5/150
													2217	2	FRB 12.5/150
													22217C	2	FRB 12.5/150
85	95	FC 218SS	100	290	22	27	130	345	95	35	235	220	1218	2	FRB 17.5/160
													2218C	2	FRB 12.5/160
													22218	2	FRB 12.5/160
100	115	FC 220SS	112	320	26	32	145	380	105	40	260	222	1220	2	FRB 18/180
													2220	2	FRB 12/180
													22220C	2	FRB 12/180
110	125	FC 222SS	125	350	26	32	155	410	110	45	290	250	1222	2	FRB 21/200
													2222	2	FRB 13.5/200
													22222C	2	FRB 13.5/200
120	135	FC 224SS	140	350	26	32	170	410	120	45	120	280	22224C/W3	2	FRB 22/215
													23224C/W3	2	FRB 14/215
														2	FRB 10/215
130	145	FC 226SS	150	380	28	35	180	445	130	50	320	300	22226C/W3	2	FRB 5/230
													23226C/W3	2	FRB 15/5/230
140	155	FC 228SS	150	420	35	42	190	500	135	50	350	305	22228C/W3	2	FRB 15/250
													23228C/W3	2	FRB 5/250
150	165	FC 230SS	160	450	35	42	200	530	145	60	370	325	22230C/W3	2	FRB 16.5/270
													23230C/W3	2	FRB 16.5/270
160	175	FC 232SS	170	470	35	42	220	550	160	60	390	345	22232C/W3	2	FRB 17/290
													23232C/W3	2	FRB 5/290