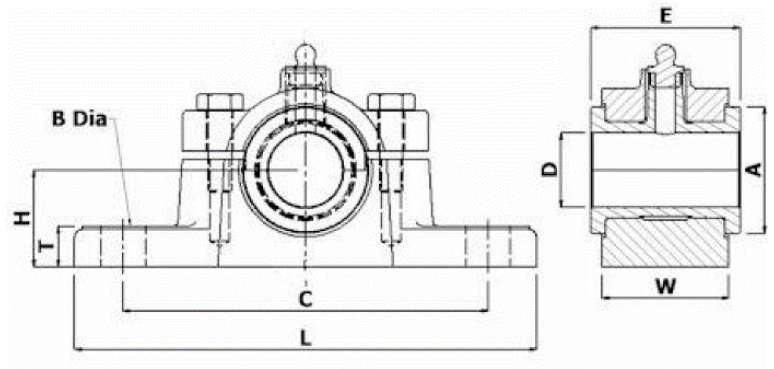


NON-SELF OILING GUNMETAL HEAVY DUTY PLUMMER BLOCKS

Non-Self-Oiling Plummer blocks,

The Gunmetal split inserts are precision machined and fitted into the cast iron housings. The gunmetal inserts are replaceable without the need to replace the housing.

NOTE: These units were originally made to inch dimensions. The same castings are used for imperial & metric sizes and '2 times' rule applies only to the inch dimensions. Therefore, the distances through the metric bores are 2 times the inch sizes



D	Inch	MM	ORDER REF	DIMENSIONS INCHES										Weight Kg
				MILLIMETRES										
			Bore	L	E	A	L	C	H	W	T	B (MM)		
1		25	EN16E EN25	S3793	2 50	1 7/8 50	7 1/4 185	5 7/8 150	1 3/8 35	1 7/16 35	5/8 16	M10	2. 1/8	
1 1/4		30	EN20E EN30M	S3797	2 1/4 65	7 55	7 3/4 200	5 7/8 150	1 5/8 41	1 11/16 45	11/16 17	M10	3.5	
1 1/2		30	EN24E EN35M EN40M	S3801	3 75	2 5/8 65	8 3/8 213	6 7/16 165	1 7/8 48	1 15/16 50	13/16 21	M12	4.5	
1 3/4		45	EN28E EN45M	S3805	3 1/2 90	2 7/8 75	10 3/4 275	8 1/4 210	2 1/8 54	2 7/16 60	7/8 22	M12	6.5	
2		50	EN32E EN50M	S3809	4 100	3 1/4 85	11 3/4 300	9 230	2 3/8 60	2 7/8 75	15/16 24	M16	9.5	
2 1/4		55	EN36E EN55M	S3813	4 1/2 115	3 3/8 90	12 11/16 325	9 13/16	3 76.2	2 5/8 65	1 1/8 30	M16	12.5	
2 1/2		60 65	EN40E EN60M EN65M	S3817	5 125	4 100	13 1/2 345	10 5/8 270	2 3/4 70	3 3/4 95	1 1/8 30	M20	16	
2 3/4		70	EN44E EN70M	S3821	5 1/2 140	4 1/4 110	14 1/4 360	11 1/4 285	3 76	4 1/4 110	1 3/16 30	M20	21.7	
3		75	EN48E EN75M	S3825	6 150	4 1/4 115	15 1/8 385	11 3/4 300	3 1/4 83	4 5/8 115	1 1/4 30	M20	27.2	
3 1/4		80 85	EN52E EN80M EN85M	S3829	6 1/2 165	5 125	15 7/8 405	12 5/8 320	3 1/2 89	5 125	1 5/16 35	M24	33.2	
3 1/2		90	EN56E EN90M	S3833	7 180	5 3/8 135	16 3/4 425	13 1/4 335	3 3/4 95	5 3/8 135	1 3/8 35	M24	40.4	