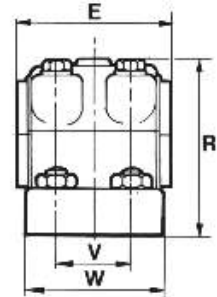
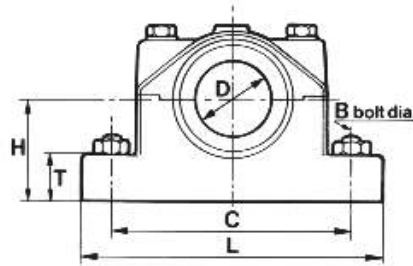


**DIN506
HEAVY DUTY PLUMMER BLOCK. (4 Bolt)**

Fully split cast iron housing with split gunmetal bearing, suitable for grease lubrication Replacement shells can be easily fitted



mm	CODE	ARVIS REF	CAST NO	E	L	C	V	H	R	W	T	Bolt Dia	Weight
55	DIN506-55M	DN6-55M	A1001/2	120	230	180	60	80	140	105	35	M16	10.5
60	DIN506-60M	DN6-60M											
70	DIN506-70M	DN6-70M	A1005/6	130	260	210	65	90	155	115	45	M16	14.5
75	DIN506-75M	DN6-75M	A1009/10	140	300	240	70	100	170	130	50	M20	26
80	DIN506-80M	DN6-80M											
90	DIN506-90M	DN6-90M	A1013/4	160	330	270	80	100	180	140	50	M20	26
100	DIN506-100M	DN6-100M	A1017/8	180	360	300	90	110	210	155	55	M24	48
110	DIN506-110M	DN6-110M											
120	DIN506-120M	DN6-120M	A1021/2	200	400	330	100	120	235	170	60	M24	48
125	DIN506-125M	DN6-125M											
130	DIN506-130M	DN6-130M											
140	DIN506-140M	DN6-140M	A1025/6	220	440	360	110	130	260	190	65	M30	59
150	DIN506-150M	DN6-150M											
160	DIN506-160M	DN6-160M	A1029/30	260	530	450	130	170	320	220	70	M30	115
180	DIN506-180M	DN6-180M											
200	DIN506-200M	DN6-200M	A1033/4	300	680	580	160	240	425	260	80	M30	234
220	DIN506-220M	DN6-220M											
240	DIN506-240M	DN6-240M	A1037/8	355	750	630	180	265	475	300	100	M36	440
260	DIN506-260M	DN6-260M											
280	DIN506-280M	DN6-280M	A1041/2	400	850	700	200	315	555	335	120	M42	540
300	DIN506-300M	DN6-300M											

Metric Dimensions are shown but all bearings can be supplied in Imperial sizes.

All bearings in the Arvis ranges follow a similar system for ordering. The first two or three characters describe the range followed by the shaft size i.e., 50M. Imperial sizes are measured in 1/16" i.e., 16E = 1". Sample ordering. DN6-60M (for a 60mm shaft) - DN6-64E (for a 4" shaft)