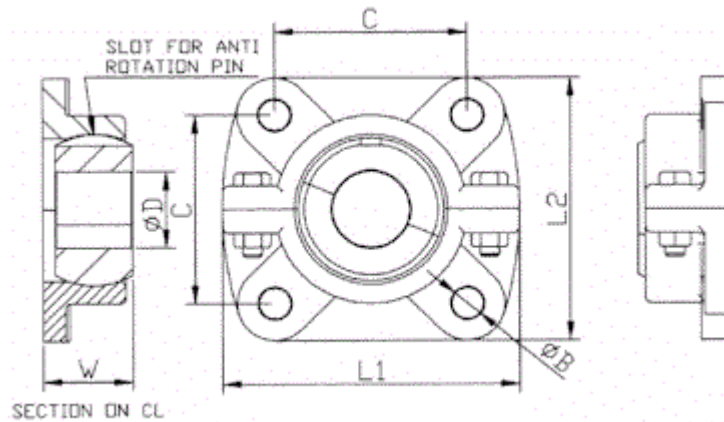


FLS –Split 4 Bolt Flange Blocks Dimensions

Find out what group of castings your shaft size falls into from the list below,
Contact the sales team at Criptic Arvis who will be pleased to deal with your enquiry and advise on the suitability.

KEY

XX	Shaft Size	E	Imperial (in 16ths of Inch) e.g. 2"= 32E
##	Bush Material	M	Metric (mm)



METRIC

D Range	Part No	C	B	L2	L1	W
10 -19	FL1S-XXM-##	57.15	8.0	76.2	88.0	24
19.05 – 25.5	FL2S-XXM-##	63.5	9.5	89.0	110.0	28.6
25.5 -28.5	FL3S-XXM-##	79.0	13.0	110.0	122.0	36.9
28.6 – 41.3	FL4S-XXM-##	92.1	14.3	121.0	158.8	45.4
41.3 – 44.5	FL5S-XXM-##	101.6	13.0	133.4	172.0	
44.6 – 51	FL6S-XXM-##	111.0	14.3	142.9	184.2	
51.1 – 57.1	FL7S-XXM-##	130.0	17.5	165.0	219.0	
57.15 – 69.86	FL8S-XXM-##	143.0	16.0	174.5	235.0	
69.87 – 100	FL9S-XXM-##	152.0	21.5	195.0	258.0	81.28
82.57 - 100	FL10S-XXM-##	197.0	22.0	240.0	324.0	

IMPERIAL

D Range	Part No	C	B	L2	L1	W
0.5 -0.750	FL1S-XXE-##	2.250	0.312	3.000	3.465	0.937
0.751 – 1.00	FL2S-XXE-##	2.500	0.375	3.500	4.300	1.125
1.001 – 1.125	FL3S-XXE-##	3.125	0.500	4.330	4.812	1.45
1.126 -1.625	FL4S-XXE-##	3.652	0.562	4.750	6.250	1.785
1.626 – 1.750	FL5S-XXE-##	4.000	0.500	5.250	6.770	2.000
1.751 -2.000	FL6S-XXE-##	4.375	0.5625	5.625	7.250	2.300
2.001 – 2.250	FL7S-XXE-##	5.125	0.687	6.500	8.625	2.500
2.251 – 2.750	FL8S-XXE-##	5.625	0.625	6.875	9.250	2.750
2.751 – 3.250	FL9S-XXE-##	5.984	0.846	7.7	10.125	3.200
3.251 -4	FL10S-XXE-##	7.750	0.875	9.500	12.75	3.500